



BANGLADESH
TCL Service Industry
 TCL: Temperature-Controlled Logistics



2024

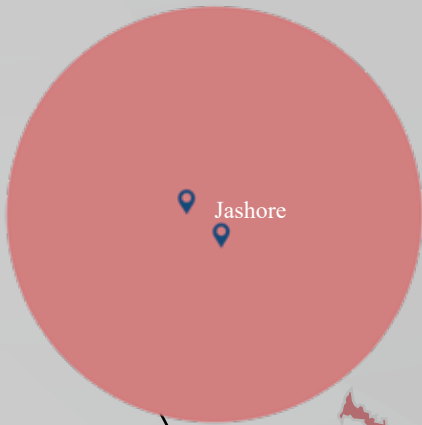




Third-party TCL storage in Bangladesh

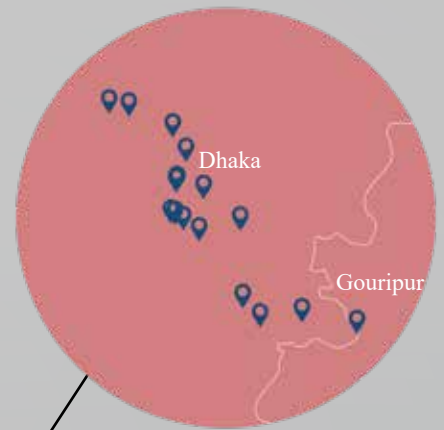
Total TCL storage capacity
+100,000MT*

Khulna



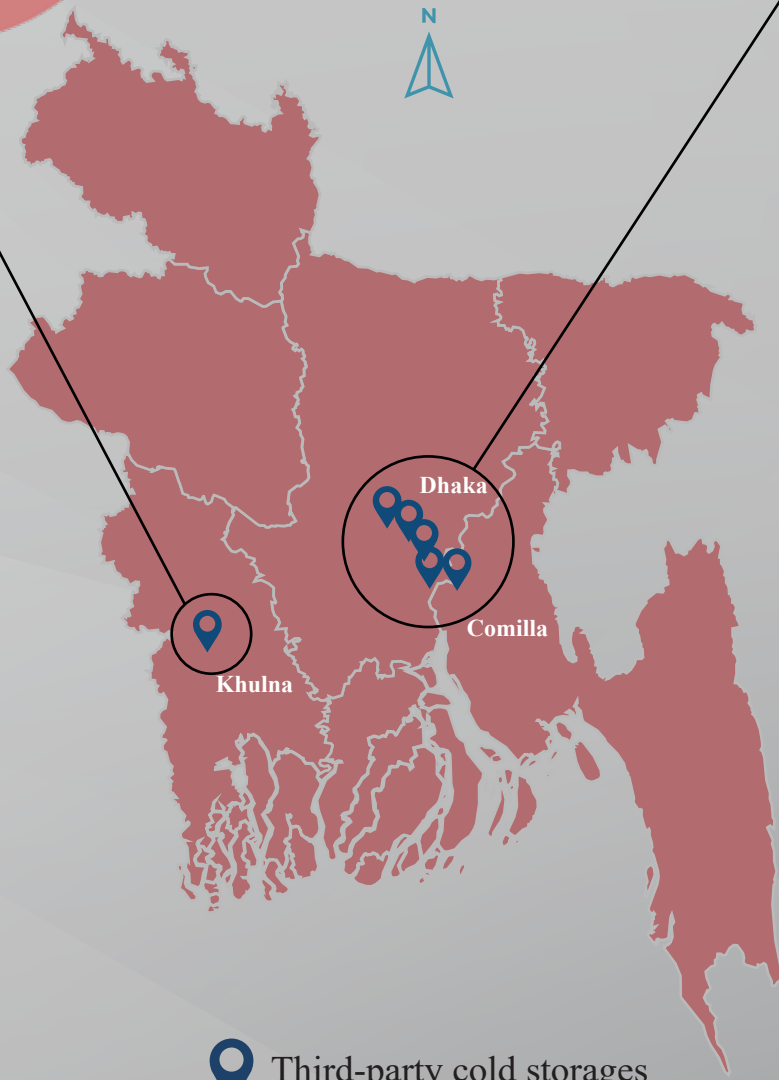
Jashore

Dhaka



Dhaka

Gouripur



Dhaka

Comilla

Khulna

Open the online map



Third-party cold storages

*Total storage capacity calculated for 19 Third party TCL storage facilities shown on the map

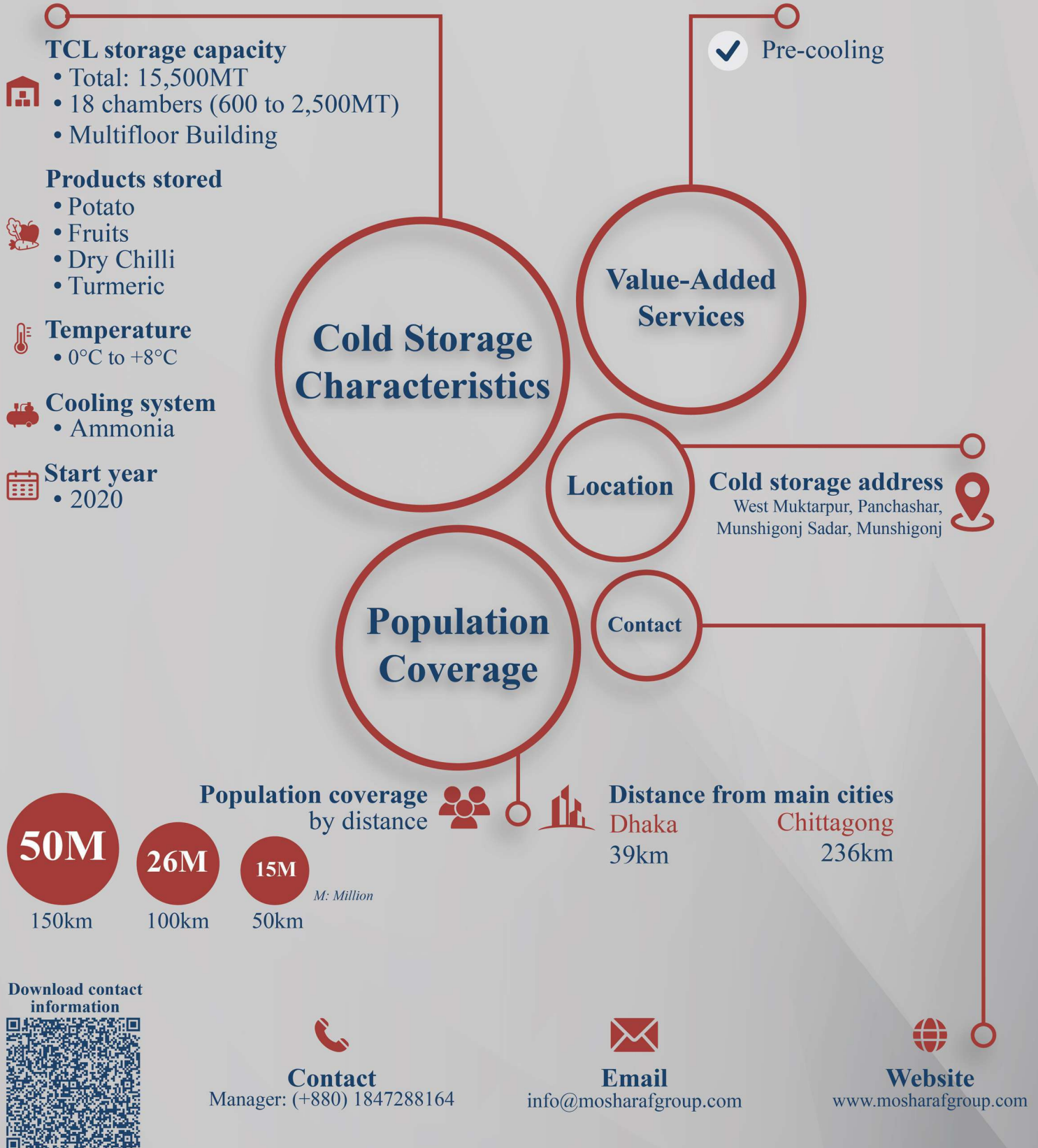
A.R.A. Cold Storage

Third-party Cold Storage



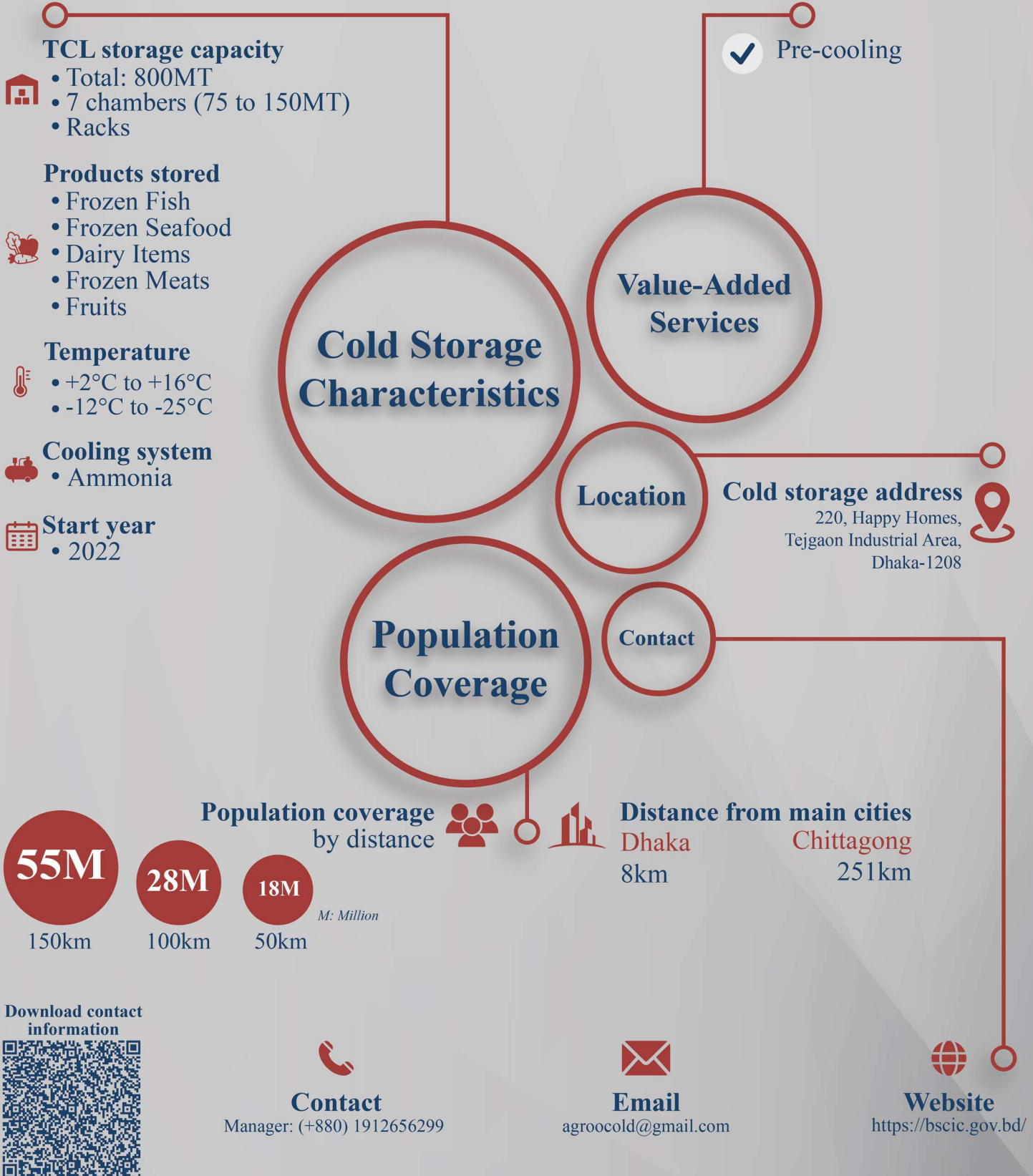
Abir Agro Food Industries

Third-party Cold Storage



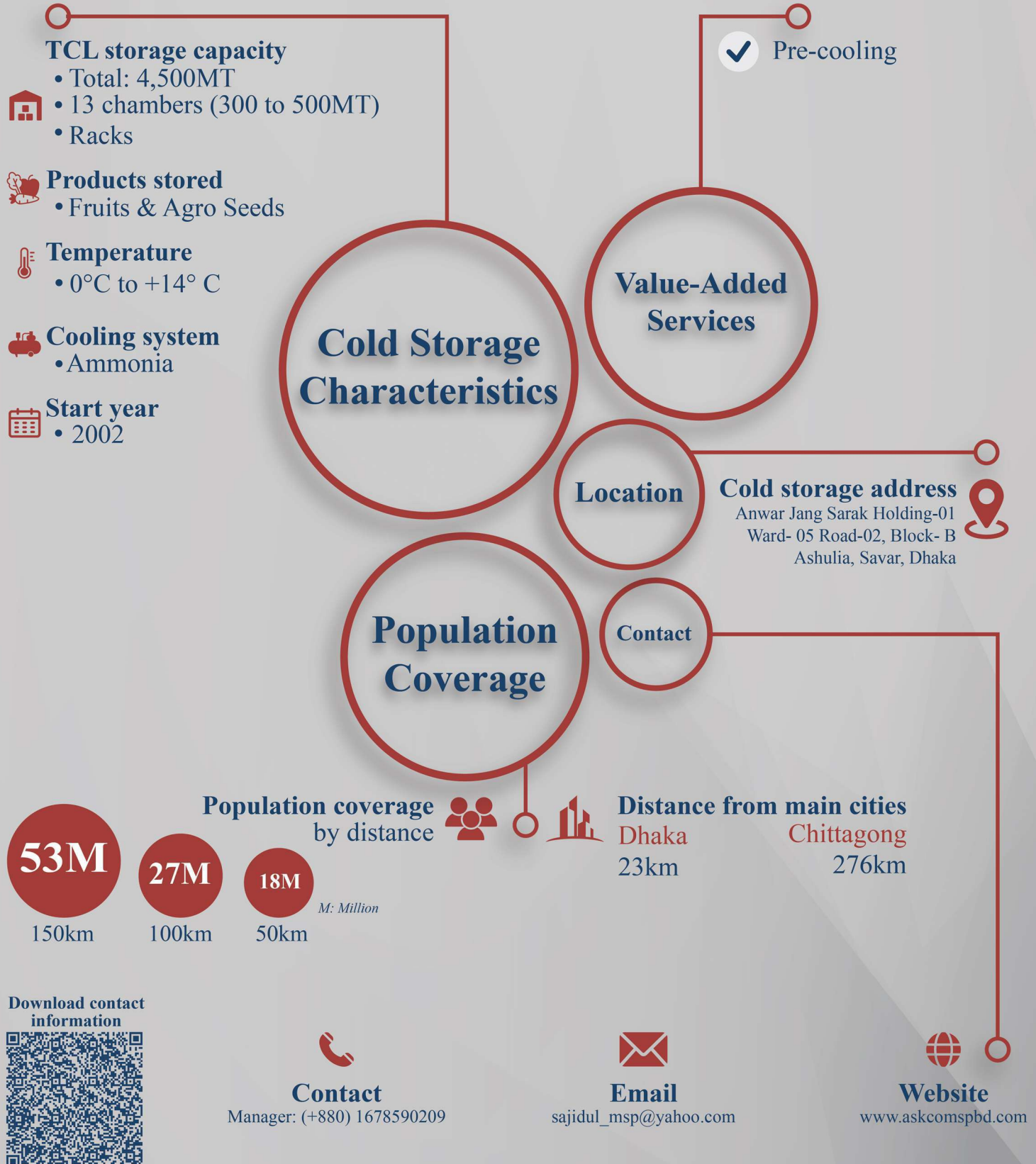
Agroo Cold Chain

Third-party Cold Storage



ASKCO MSP Centre

Third-party Cold Storage



BADC Cold Storage

Third-party Cold Storage





TCL storage capacity

- Total: 560 MT
- 7 chambers (80MT)
- Racks

Products stored

- Frozen Meat
- Frozen Fish
- Seafood
- Raw Materials for Quick-Service-Restaurants

Temperature

- Up to -20°C

Cooling system

- Freon

Start year

- 2013

✓ Pre-cooling

Value-Added Services

Cold Storage Characteristics

Location

Cold storage address
91, Nandipara, Trimohoni Bridge, Khilgaon, Dhaka-1219

Population Coverage

Contact

Population coverage by distance



Distance from main cities

Dhaka
10km

Chittagong
243km

54M

150km

28M

100km

19M

50km

M: Million

Download contact information



Contact

Office: (+880) 1728002604
Manager: (+880) 1618003740



Email

suvro@bontoncompany.com
info@bontoncompany.com

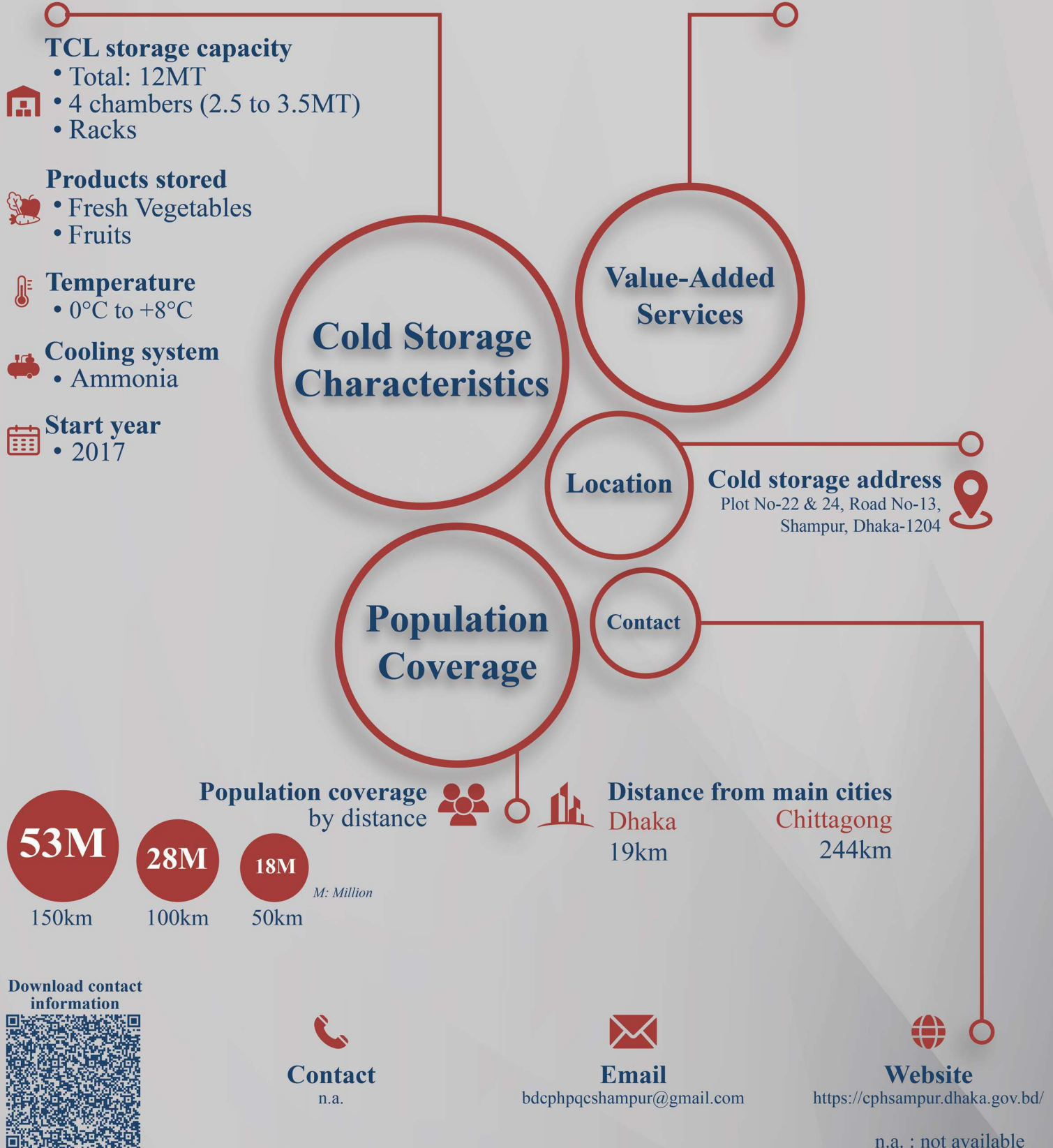


Website

www.bontoncompany.com

Central Packing House

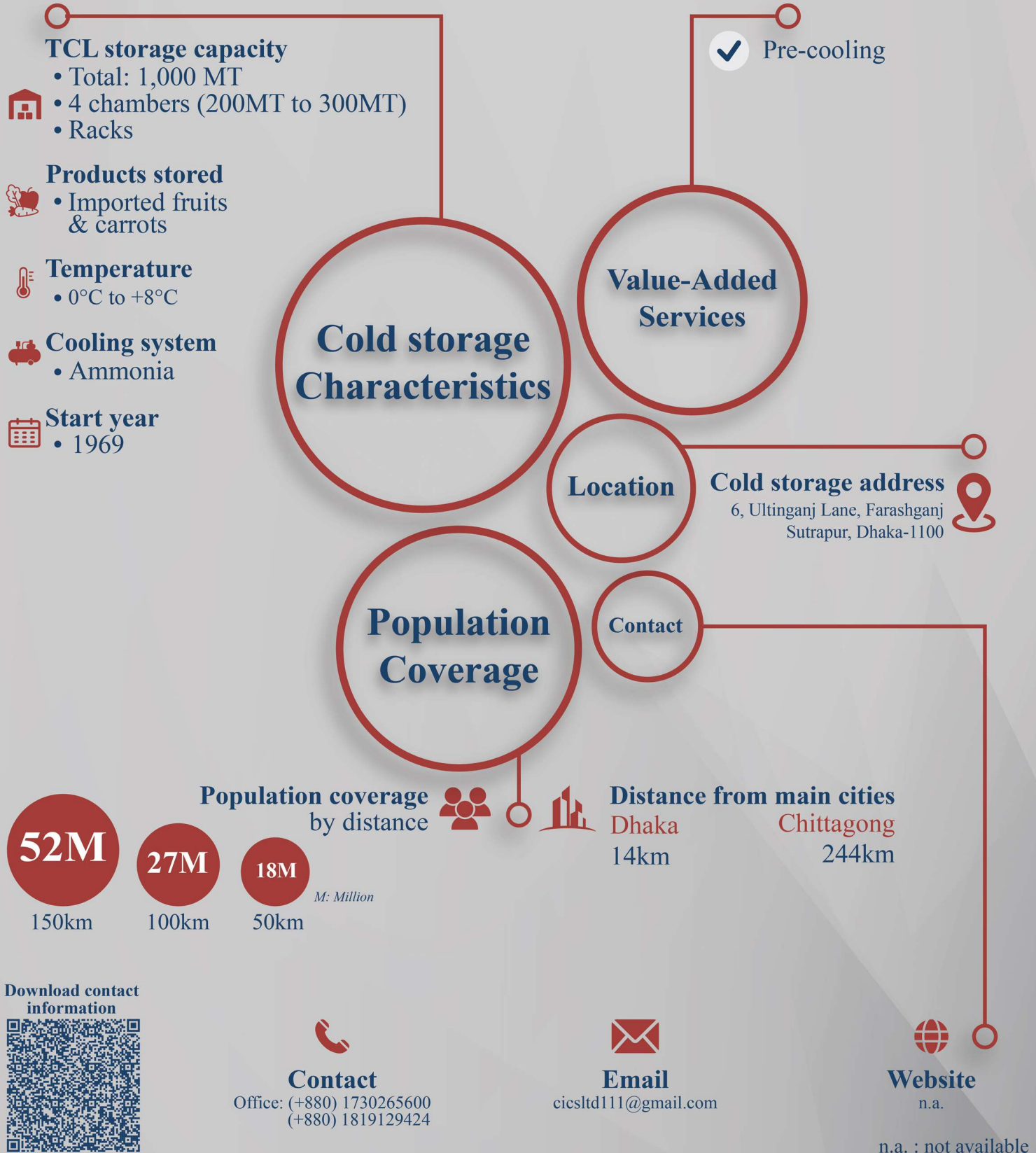
Third-party Cold Storage





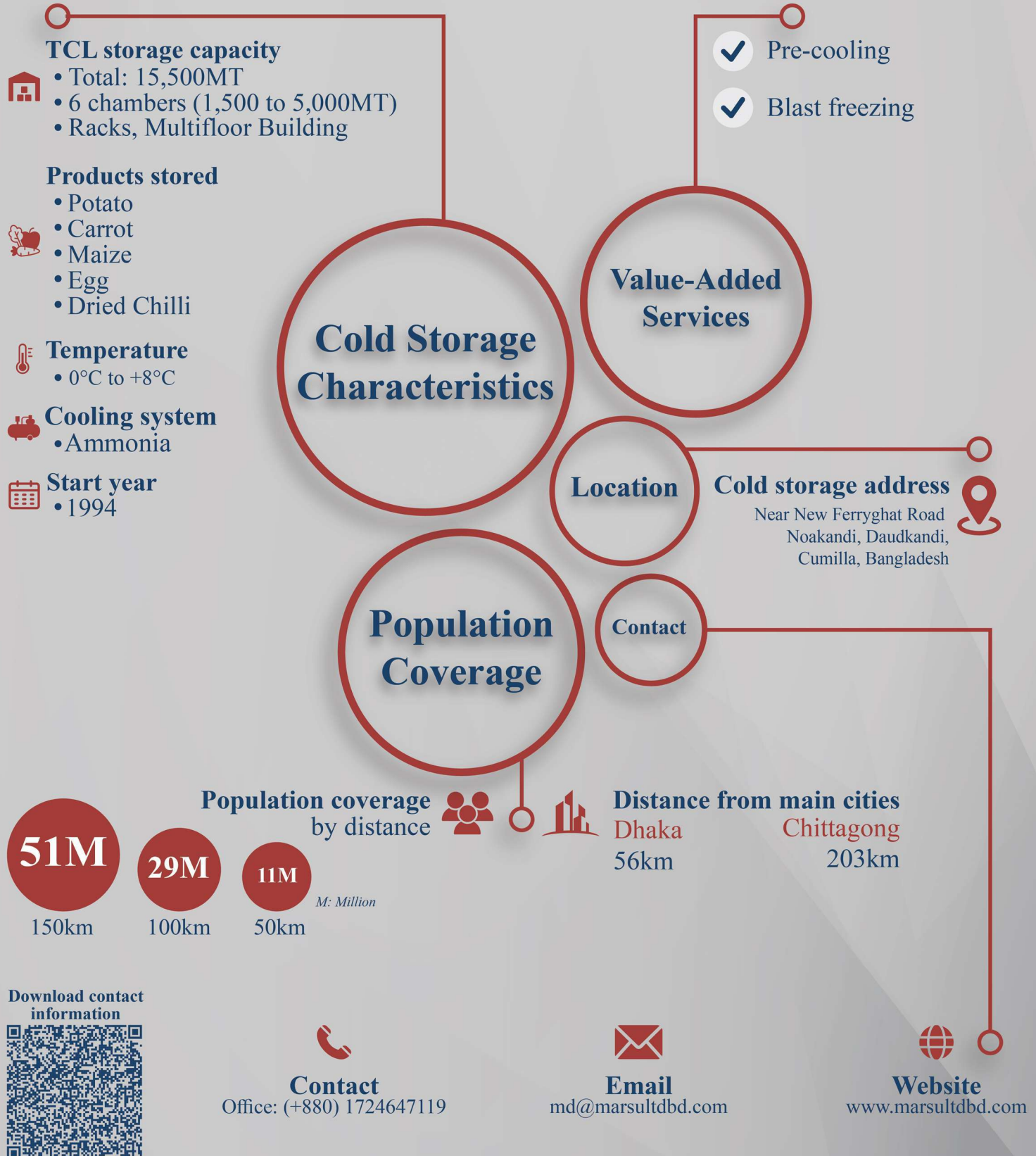
City Ice & Cold Storage

Third-party Cold Storage



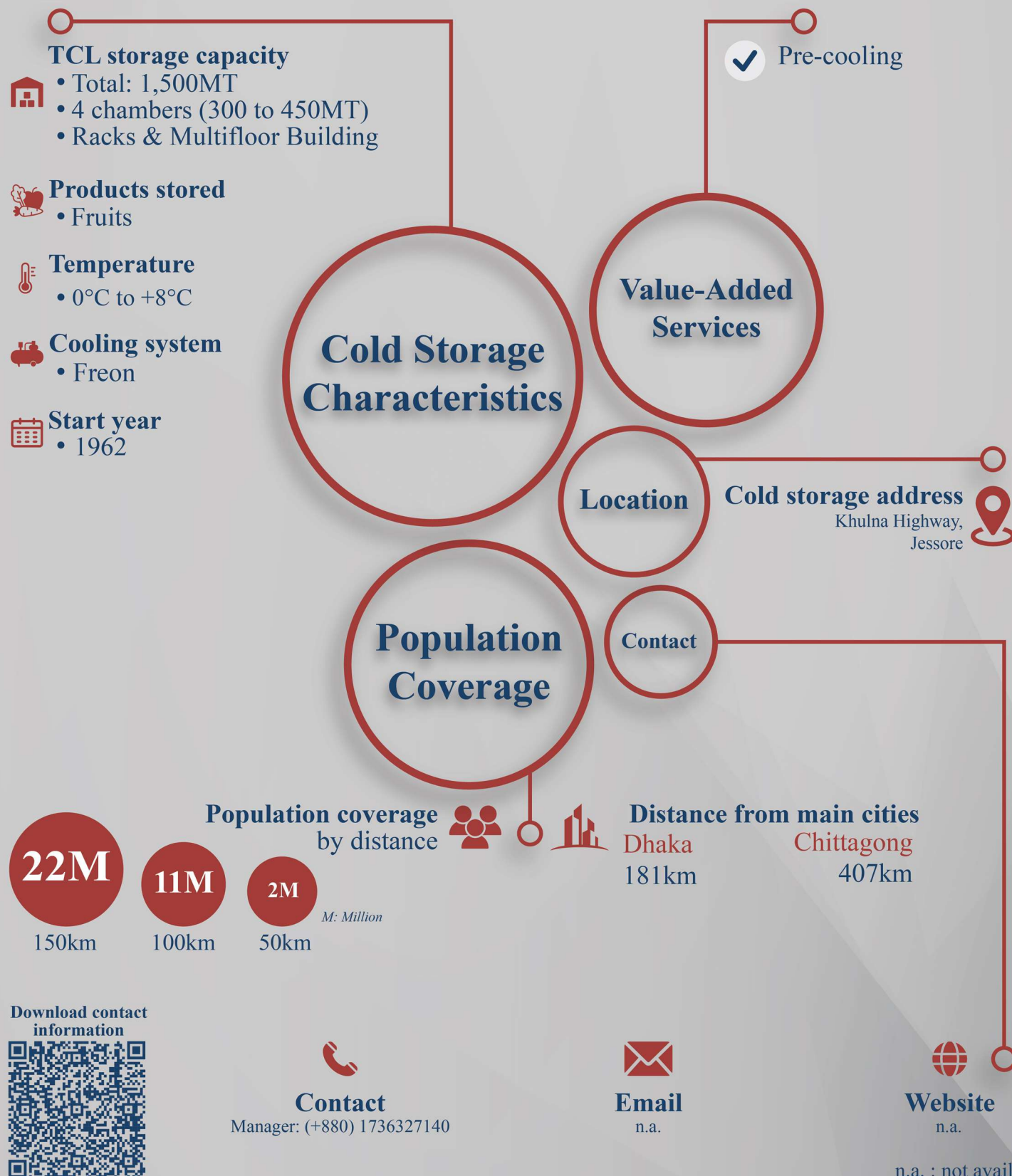
Himaloy Cold Storage

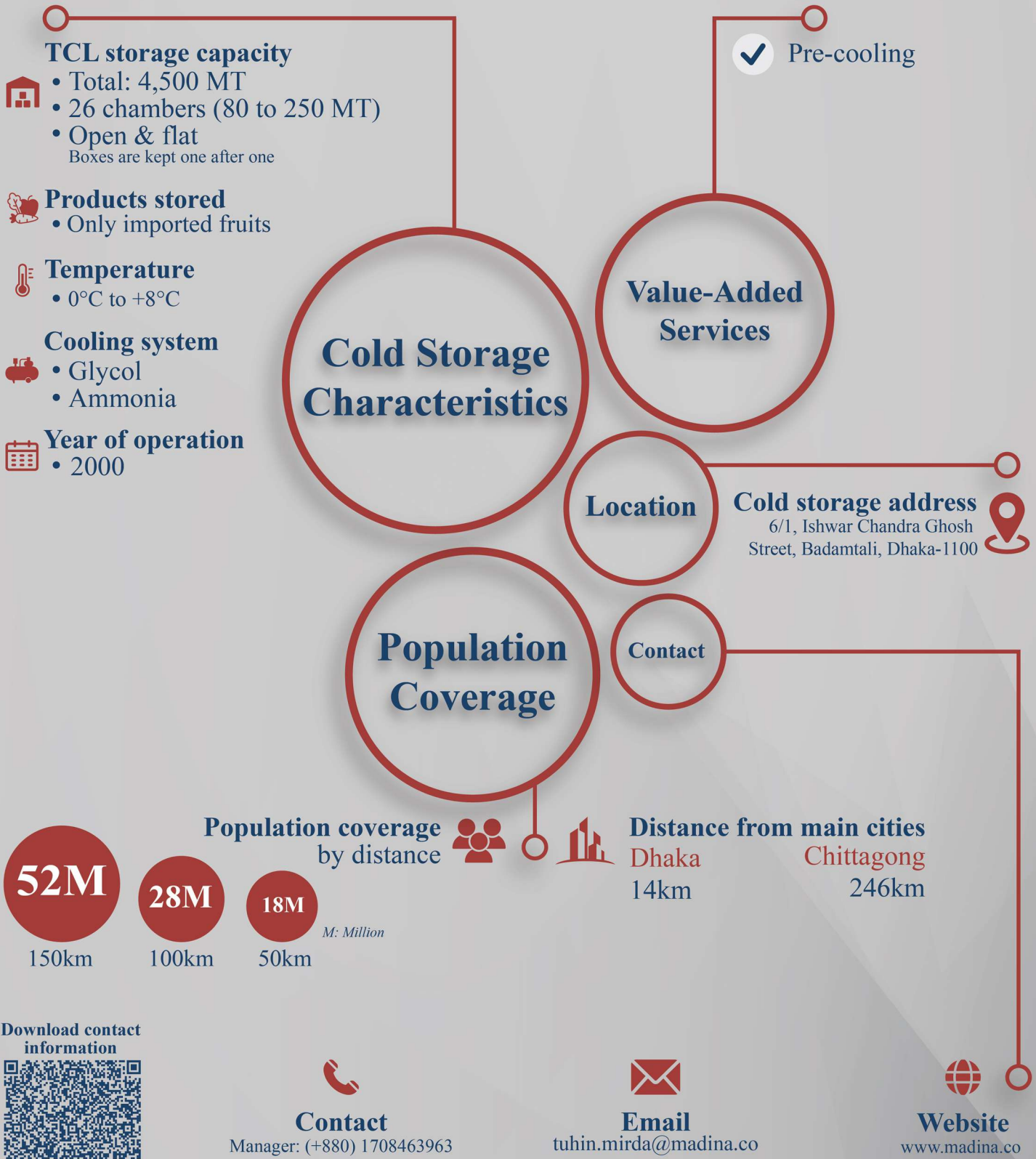
Third-party Cold Storage



Jessore Cold Storage

Third-party Cold Storage

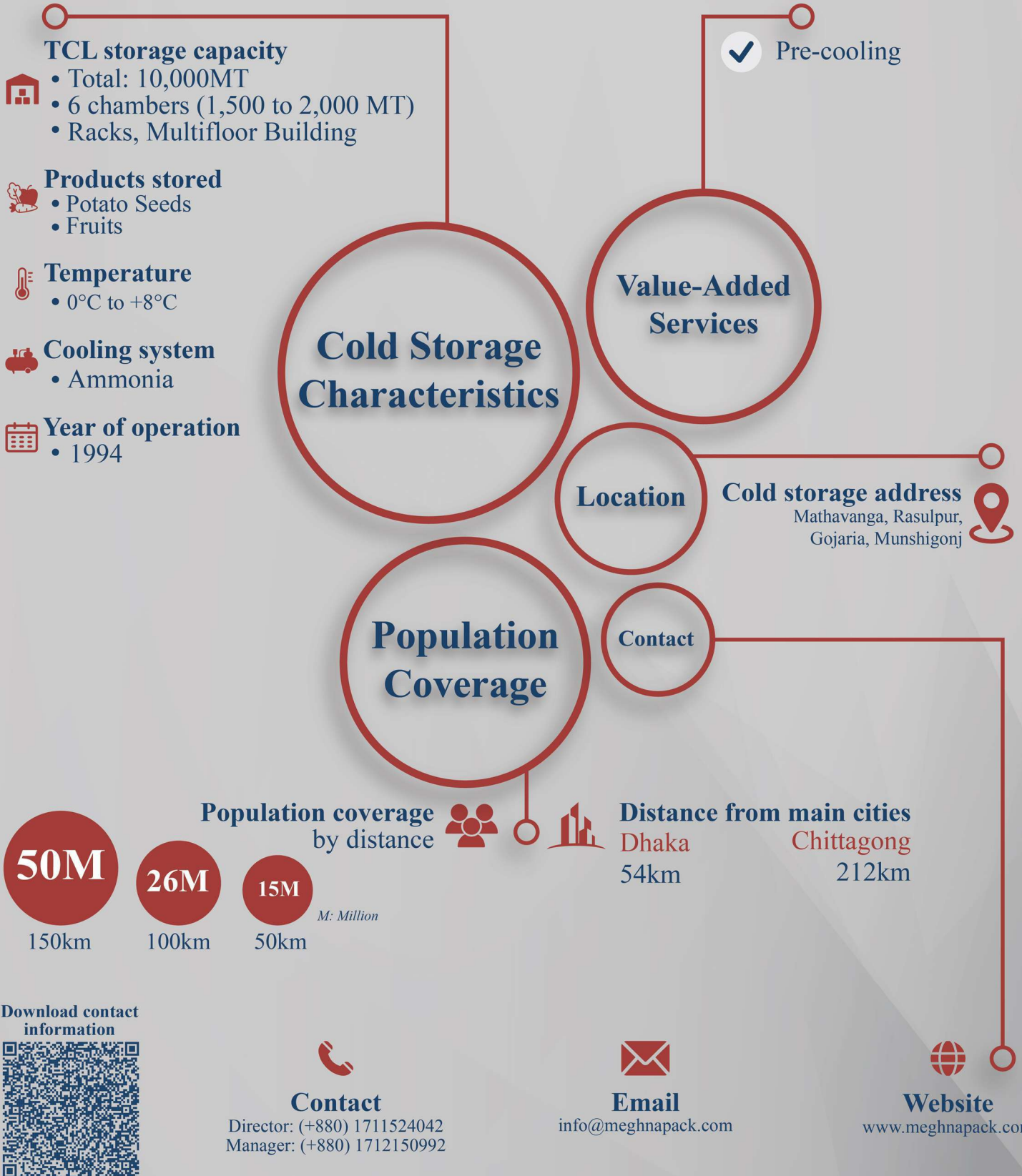




Ltd. : Limited

Meghna Multipurpose Himagar

Third-party Cold Storage



Noor Trade House

Third-party Cold Storage

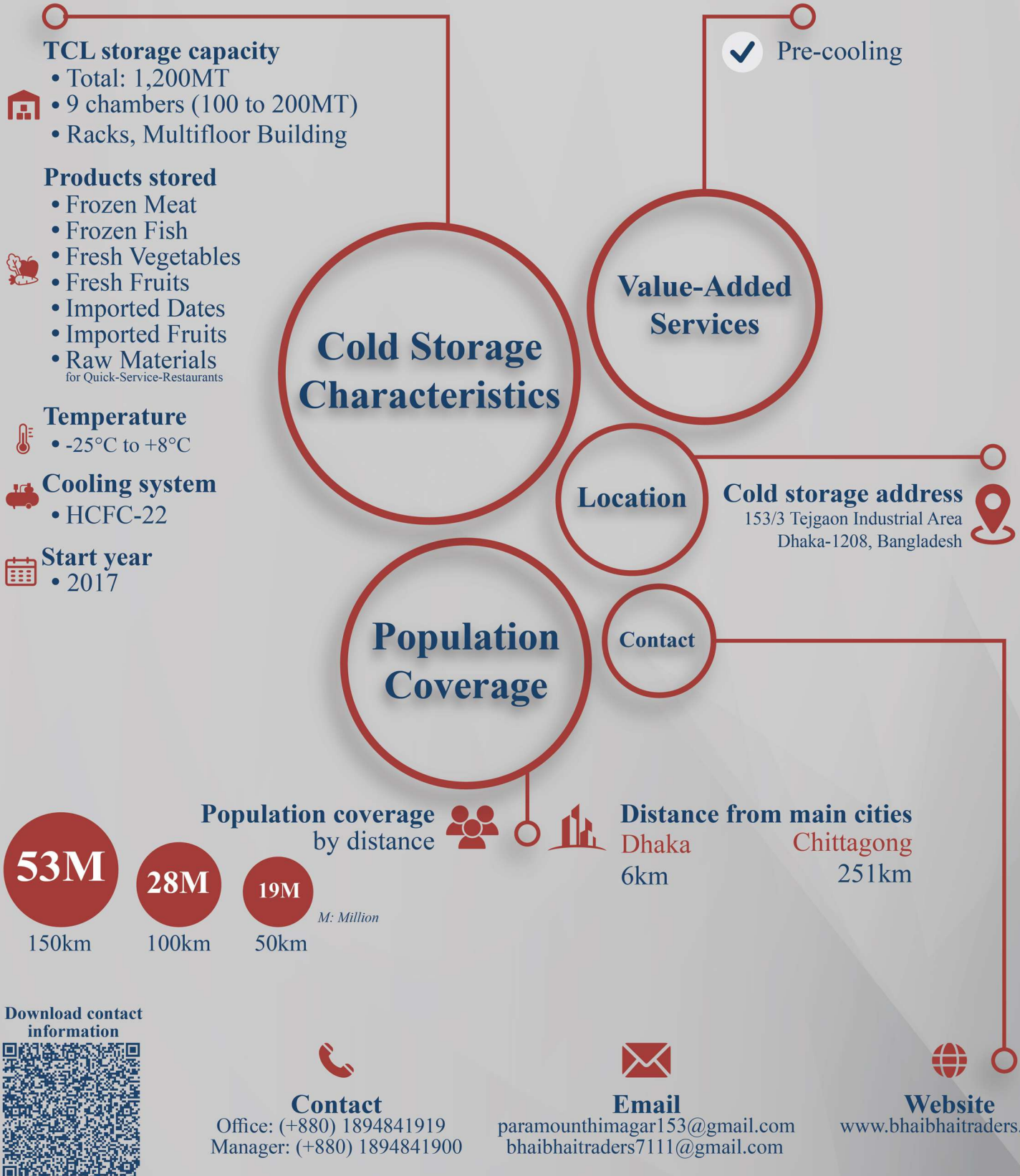


NOOR TRADE HOUSE



Paramount Himagar

Third-party Cold Storage



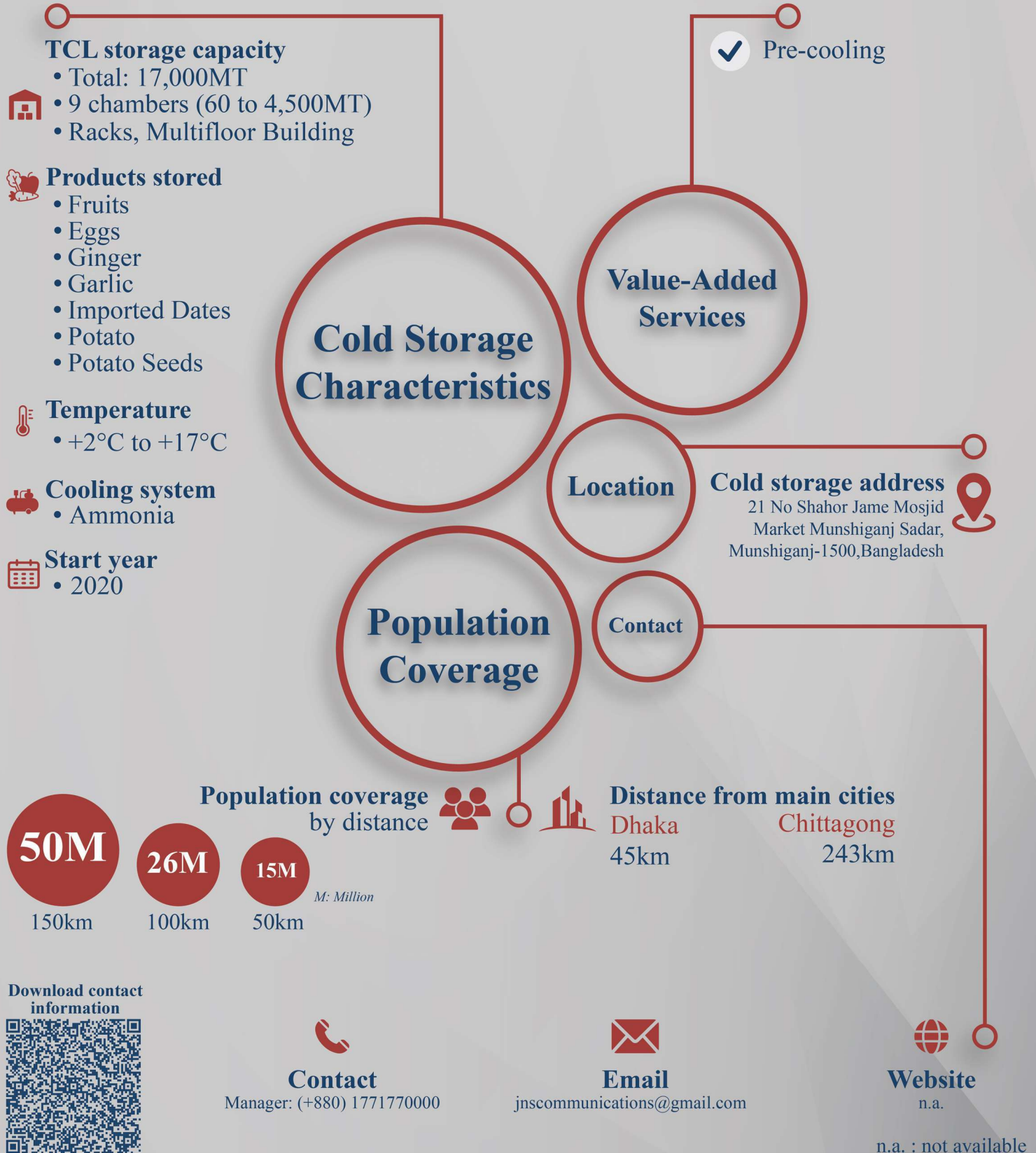
Rahman Cold Storage

Third-party Cold Storage



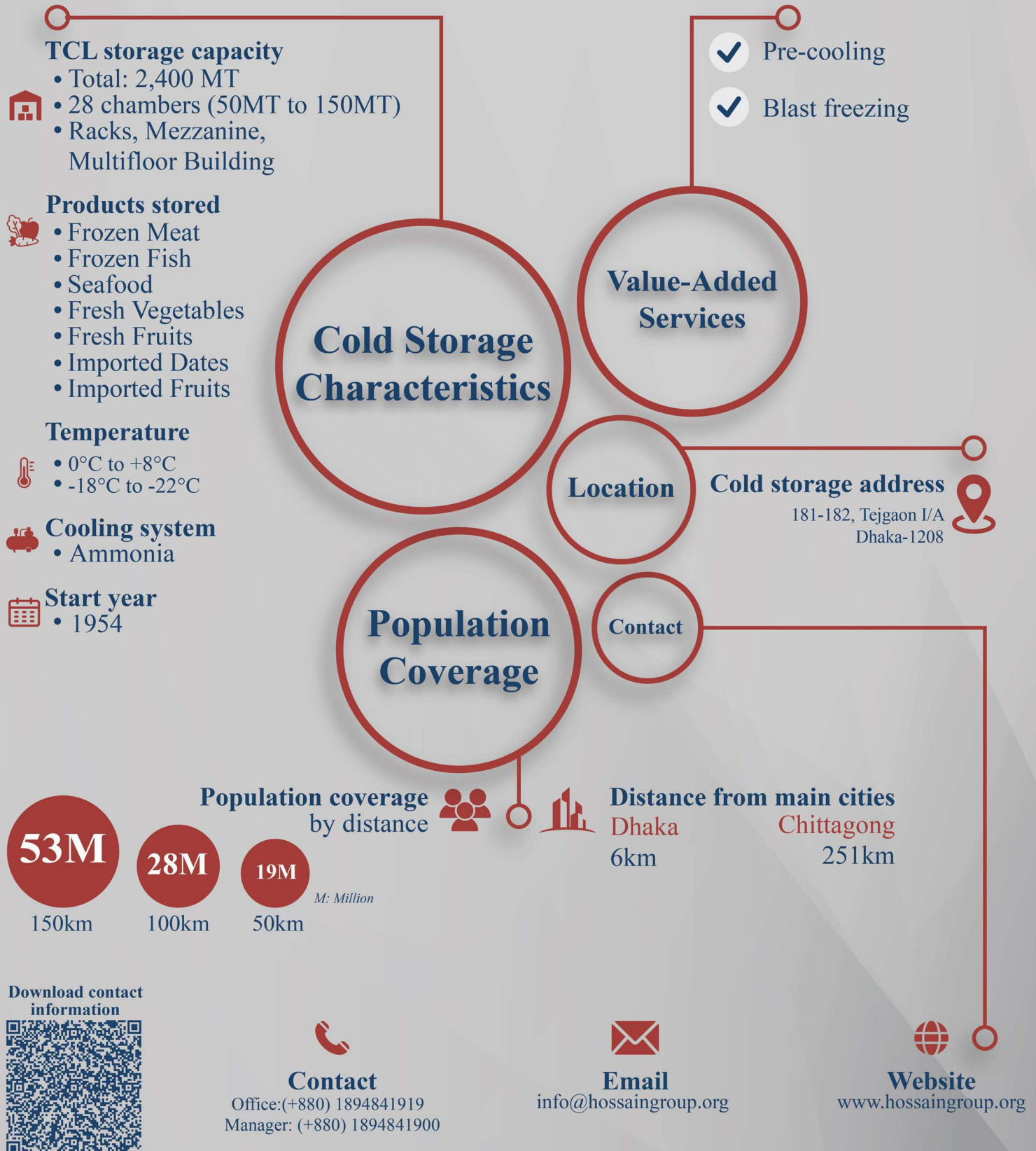
Sultan Cold Storage

Third-party Cold Storage



Tejgaon Special Temperature Control Himagor

Third-party Cold Storage



Wadud Cold Storage

Third-party Cold Storage





BANGLADESH
TCL Transportation providers
TCL: Temperature Controlled Logistics



TCL Transportation in Bangladesh

Dhaka



Open the online
map



TCL Transport service provider

ARM Transport & Logistics

TCL Transportation



Vehicle General Information

 18 TCL vehicles

Type of vehicle
2×2×2 

Carrying capacity
From 2MT to 12MT 

Start year
2012 

Office Location

Contact



House #300, Road #03, Block #8 (Ext.),
Sagufta NM Housing Mirpur-12, Dhaka

Download contact information



Contact

Office: (+880) 1958196599
Manager :+8801896177400



Email

info@beamgroupbd.com
rezaul@beamgroupbd.com



Website

www.beamgroupbd.com/bpil

Vehicle General Information

 16 TCL vehicles

Type of vehicle
2×2×2



Carrying capacity
1.5 MT, 3 MT, 5 MT, 10 MT

Start year
1981



Office Location

Contact



RH Home Center (6th Floor), 74/B/1,
Green Road, Dhaka-1215, Bangladesh

Download contact
information



Contact

Office: (+880) 1819318851
Manager: (+880) 819314882



Email

abdullah@badalandco.com
bkdas@badalandco.com



Website

www.badalandco.com

Vehicle general information

18 TCL vehicles

Type of vehicle
3 vehicle 2×2 •
15 vehicle 2×2×2 •

Carrying capacity
From 1MT to 10 MT

Start year
2013

Office Location

Contact

91, Nandipara, Khilgaon, Dhaka-1219, Bangladesh

Download contact information



Contact

Office: +8801728002604
Manager : +8801618003740



Email

suvro@bontoncompany.com
info@bontoncompany.com



Website

www.bontoncompany.com

DESH Enterprise

TCL Transportation



Download contact information



Contact

Office: (+880) 1772808071
Manager: (+880) 2226600014



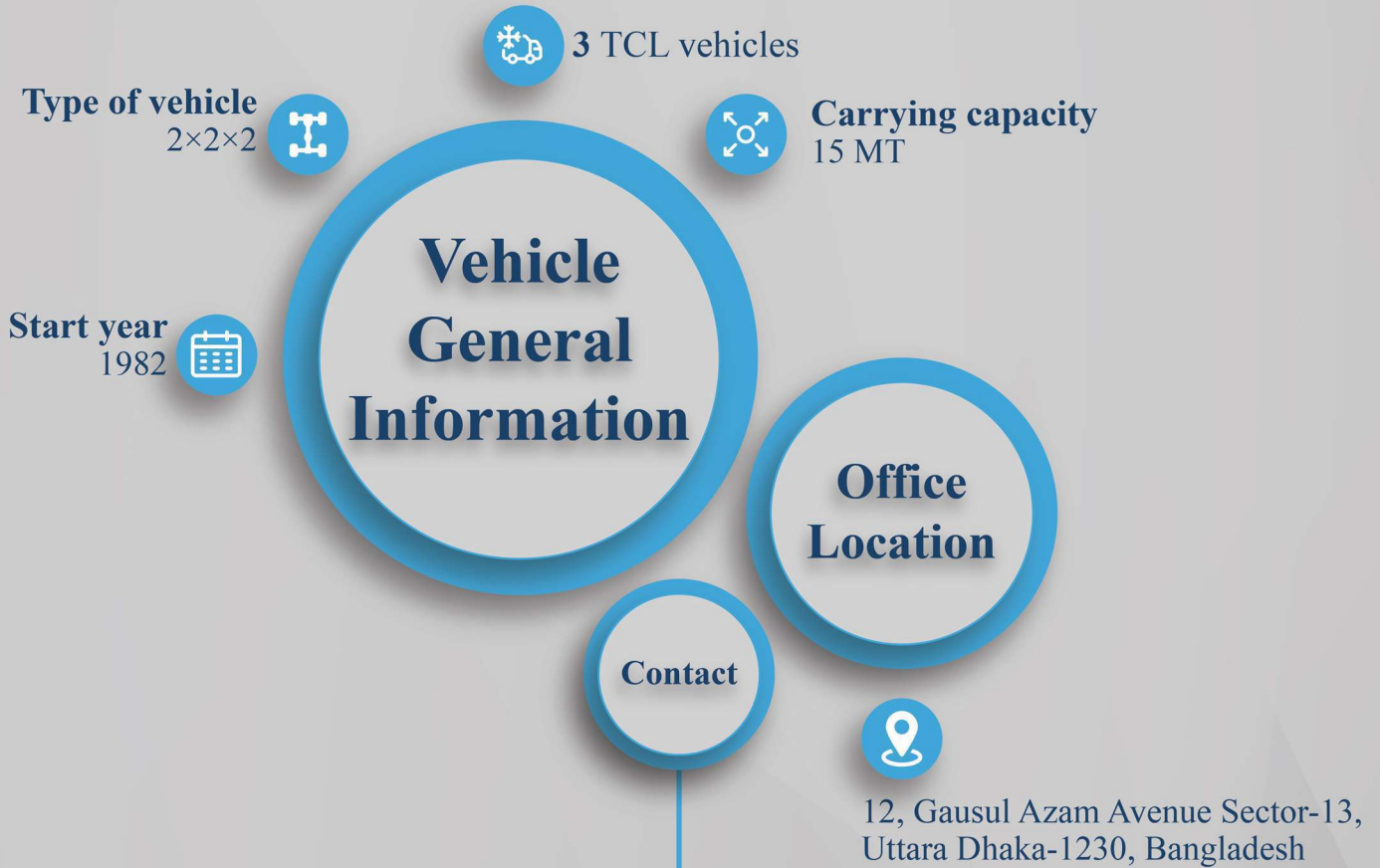
Email

info@deshenterprisebd.com
infodeshenterprisebd@gmail.com



Website

www.deshenterprisebd.com



Download contact information



Contact

Office: (+880) 730058323



Email

manzur.ahmed@hellmann.com



Website

www.hellmann.com



Vehicle General Information

 5 TCL vehicles

Type of vehicle
2×2×2



Carrying capacity
From 4MT to 5MT



Start year
1996



Office Location

Contact



Sech Bhaban (3rd Floor, Western Side),
22 Manik Mia Avenue, Sher-e-Bangla
Nagar, Dhaka-1207, Bangladesh

Download contact
information



Contact

Office: (+880) 1511579579



Email

mitulsaha@hortex.org
mitulecon@gmail.com



Website

<https://hortex.portal.gov.bd>

Islamia Trade Center

TCL Transportation

Vehicle General Information

 10 TCL vehicles

Type of vehicle
2×2×2



Carrying capacity
From 5MT to 13MT

Start year
2012



Office Location

Contact



97/103 (1st Floor), Town Hall Super
Market, Mohammadpur, Dhaka

Download contact
information



Contact

Office: (+880) 1711038831



Email

islamiatrad@gmail.com



Website

n.a.

n.a.: not available

Memma Enterprise

TCL Transportation

Vehicle General Information

 2 TCL vehicles

Type of vehicle
2×2×2 

Carrying capacity
3MT 

Start year
2003 

Office Location

Contact



169/1B/1 North Kunipara,
Shantiniketon, Tejgoan IA,
Dhaka-1208

Download contact
information



Contact

Office: (+880) 1713010207



Email

memmaenterprise@yahoo.com



Website

n.a.

n.a.: not available

Vehicle General Information

 5 TCL vehicles

Type of vehicle
2×2×2 

Carrying capacity
7-13 MT 

Start year
1987 

Office Location

Contact



174/175 Chodhury Mansion,
East Tejturi Bazar, Tejgaon C/A Dhaka

Download contact
information



Contact

Office: (+880) 1716795329
Manager: (+880) 1950500319



Email

info@nazrultransport.com



Website

<https://nazrultransport.com/>

Nowabgonj Transport Agency

TCL Transportation





Disclaimer : This material, data, and presentation is based upon work supported by the U.S. Department of Agriculture, Foreign Agricultural Service under Federal award No. FCC-388-2020/003-00. Any opinions, findings, conclusions, or recommendations expressed or made are those of the research and data visualization team and/or the user of the data and, as such, do not necessarily reflect the view or of the U.S. Department of Agriculture.

Get a digital version of this document

