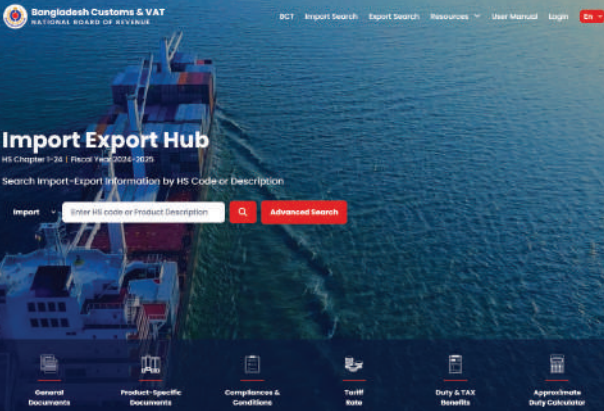




# Import Export Hub: A centralized repository for trade compliance



The Import Export Hub  
has been developed with support from the  
U.S. Department of Agriculture,  
Bangladesh Trade Facilitation Project under the  
oversight of Customs Modernization Section of  
National Board of Revenue (NBR)

For more information,  
please visit  
<https://hub.bangladeshcustoms.gov.bd/>



# About the System

## Import-Export Hub: A Centralized Repository for Trade Compliance

The Import-Export Hub is a comprehensive, searchable repository designed to provide traders with essential regulatory and compliance information required for clearing imported and exportable consignments in Bangladesh.

This digital platform offers HS Code-specific document requirements, necessary certifications for imports and exports, applicable tariff rates, including total tax incidence, and relevant Statutory Regulatory Orders (SROs) governing preferential trade agreements. Additionally, it provides insights into available SRO benefits applicable to trade activities. These features significantly improve the ease of doing business by reducing administrative burdens and ensuring transparency in trade procedures.

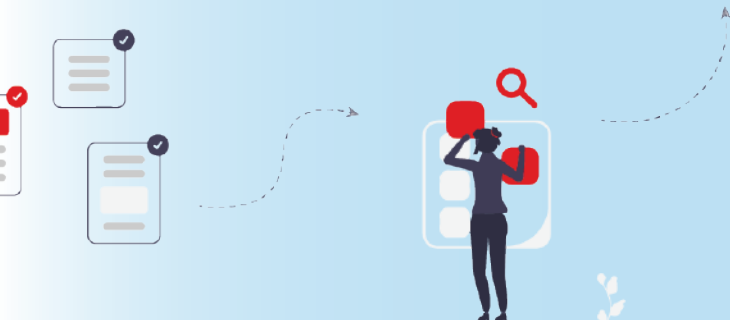
With its user-friendly interface and up-to-date regulatory insights, the Import-Export Hub reflects Bangladesh's commitment to digital transformation in public administration and global trade facilitation, fostering a more efficient and predictable trade environment.



# Features of the System



- **Easy Search Options:** Traders can search both by HS code or product description and the system will guide them to their desired product and its requirements.
- **Advance Search Options:** Advance search option provides opportunity to search and generate report for research and analysis purpose.
- **Resources:** Through the system, users can get hold of all the legislations clustered by agencies relevant to export and import, list of import-export prohibited products, all preferential SROs, etc. under one hub.
- **Legislative References:** All Acts are linked to [bdlaws.minlaws.com](http://bdlaws.minlaws.com), SROs are linked to respective agency websites and Rules as well as Regulations are stored within the hub for easy access.



## The system provides the following clusters of information

- **General Documents:** The section provides details of the general documents that are required for importing or exporting any product i.e, IRC, ERC, VAT Registration, etc. The list contains purpose, validity, issuing agency and legislative references for each document.
- **Product-specific Documents:** This section contains list and details of documents required for customs clearance or regulatory purpose for importing and exporting any product. The list contains purpose of each document, validity, issuance procedures, issuance stage, issuance entity as well as their legislative references.
- **Compliances and Conditions:** This section mentions all necessary product-wise compliances and conditions for import and export from all relevant SROs and also links complete SROs.
- **Tariff Rates:** This section provides tariff rates for each product
- **Duty and Tax Benefits:** All SROs and other benefits provided to specific products are listed here.
- **Approximate Duty Calculator:** With this feature, trader can calculate approximate duties for each product by inputting consignment values, currency and exchange rate.
- **Examination and Assessment Checklist:** With dedicated login from Customs Officials, additional features like examination checklist and assessment checklist is visible using which Customs officials will get guidance on things to focus during examination and assessment.
- **Additional Features:** The system also includes product-wise preferential benefits that Bangladesh gets while trading with regional and bilateral partners.

